

American English Accent Training at the USLHC

Accent Training

Individual accent training is available at the USLHC. These services are provided by graduate students in the Department of Communication Sciences and Disorders, under the supervision of a licensed and certified speech-language pathologist.

The Focus of Accent Training

- Develop effective speaking strategies to be understood in self-selected communicative contexts
- Learn to codeswitch depending on the communication partner or audience
- Learn pronunciation of General American English (GAE) consonants and vowels
- Produce speech using rate, rhythm, and intonation that is consistent with GAE patterns
- Improve overall communication skills and speak with confidence in chosen contexts



What is Accent Training?

The goal of accent training is to examine the differences between individual native dialects and General American English (GAE). Individuals who elect to participate in accent training will receive explicit instruction and specific feedback regarding their speech patterns and GAE. In chosen contexts, strategies to enhance pronunciation of GAE will be shared and practiced. A structured home practice program will be created together to ensure carryover of skills.

For more information about accent training, visit:

<https://www.asha.org> and search accent modification

The Benefits of Accent Training

Participation in accent training increases communication effectiveness in some contexts. Rather than the listener attending to the accent, listeners will attend to the message.

Codeswitching between individual native dialects and General American English (GAE) in chosen contexts may result in increased confidence in professional and social situations.

Individuals will learn to produce speech sounds and patterns consistent with GAE using proven techniques and strategies. As a result, individuals will produce speech that is better understood by others in self-selected communicative contexts.



SEEK

FIND

Registration Required

Call 713-743-0915 to register or email Michele Ozgen at uslhc@uh.edu. Laura Cizek, Clinical Associate Professor, can be reached via email at lscizek@Central.uh.edu.

Fees

- Sliding scale based on income
- Discounts available for UH faculty, staff, and students

Schedule

Varies — Approximately 12 weeks in the fall and spring semesters

Who is Eligible?

Adults who wish to learn the differences between their individual native dialect and General American English (GAE).

Location


The University Speech-Language-Hearing Clinic — Main UH Campus


Equitable Treatment Services at the USLHC are available to all people, regardless of gender expression and identity, ethnicity, race, sexual orientation, age, disabilities, religious beliefs, and socioeconomic status.

 facebook.com/USLHC

 [@UHCOMD](https://www.instagram.com/UHCOMD)

The University Speech-Language-Hearing Clinic is located in the Melcher Life Sciences building next to the Fertitta Center.

 3871 Holman St. M156
Houston, TX 77204-6018

 713-743-0915

 www.uh.edu/class/comd/slhc

SERVICES OFFERED AT THE USLHC

Child Speech & Language

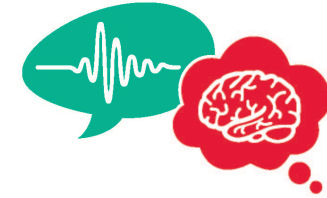
- Pre-K Language Learning Group
- Language Development
- Speech Sounds
- Apraxia
- Fluency
- Autism
- Social Skills

Adult Speech, Language, & Cognition

- Aphasia
- Post Stroke Communication Group
- Parkinson's Voice Project
- Transgender Voice
- Fluency
- American English Accent Training

Hearing Services

- Drop-off hearing aid cleaning and repair services



USLHC UNIVERSITY
SPEECH-LANGUAGE-HEARING
CLINIC

UNIVERSITY of HOUSTON



**AMERICAN ENGLISH
ACCENT TRAINING**

**UNIVERSITY OF
HOUSTON**